

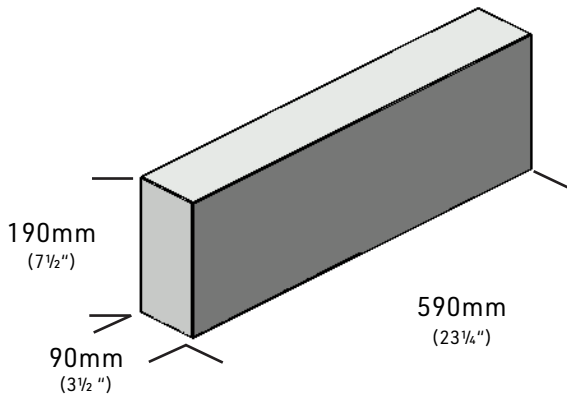


**SHOULDICE
STONE**

TECHNICAL DETAILS

90x190x590 Tapestry Stretcher

PRODUCT DRAWINGS

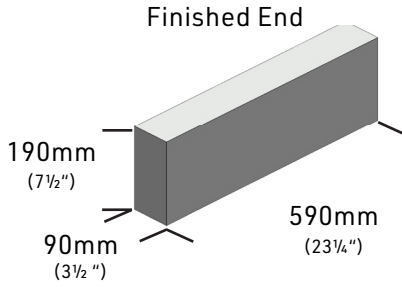


PRODUCT DETAILS

	90x190x590 Tapestry Stretcher		90x190x590 Tapestry Corner	
	Metric	Imperial	Metric	Imperial
Selling UoM		EA		EA
Units/Skid	60EA	60EA	60EA	60EA
Weight/Each	21.5kg	47.39lbs	21.5kg	47.39lbs
Weight/Skid	1,311kg	2,883lbs	1,311kg	2,883lbs
# of Layers	3	3	3	3
Pieces/Layer	20	20	20	20
Coverage/Unit	0.124m ²	1.33sf	0.124m ²	1.33sf
Coverage/Skid	7.41m ²	79.8sf	7.41m ²	79.8sf
Linear Unit/Piece	0.20m	0.66sf	0.20m	0.66lf
Pallet Size	101cmx119cm	40"x47"	101cmx119cm	40"x47"

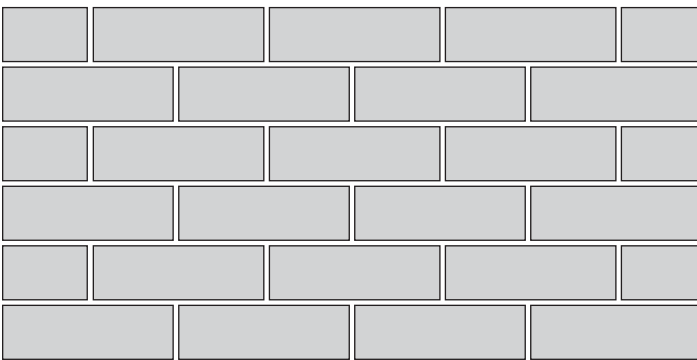
CORNERS

Corner units are sold separately.

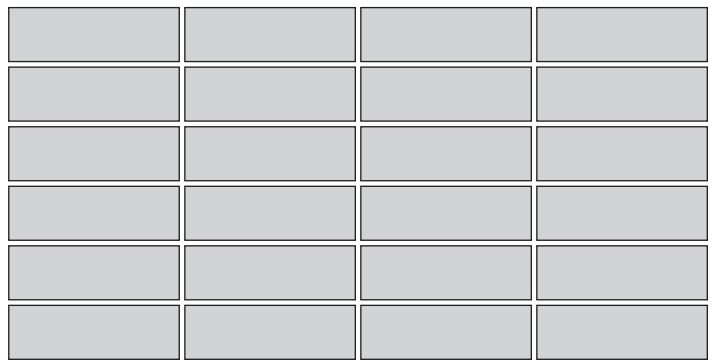


TYPICAL INSTALLATION PATTERN

Running Bond

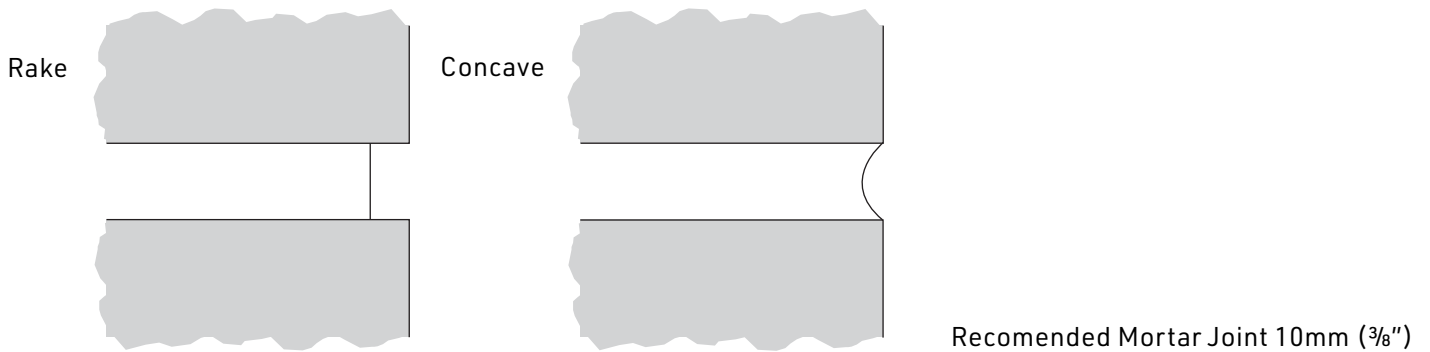


Stack Bond

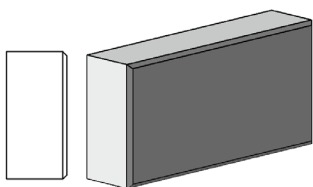


Typical Installation Guidelines: • Blend product from multiple packages for most natural look

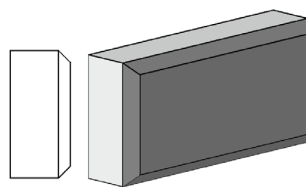
TYPICAL MORTAR JOINT



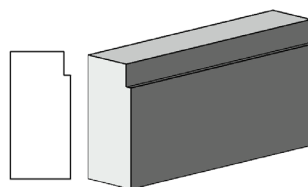
PRODUCT OPTIONS



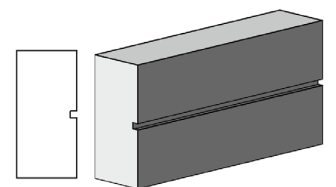
Bevel
10mm
(3/8")



Bevel
25mm
(1")



Margin Cut
10mm x 35mm
(3/8" x 1 3/8")



Horizontal Score
10mm x 10mm
(3/8" x 3/8")

TYPICAL COURSING GUIDE

Tables Include one unit and one joint.

Vertical Units	10mm Joint	3/8" Joint
1	200mm	77/8"
2	400mm	153/4"
3	600mm	235/8"
4	800mm	311/2"
5	1,000mm	393/8"
6	1,200mm	471/4"
7	1,400mm	551/8"
8	1,600mm	63"
9	1,800mm	707/8"
10	2,000mm	783/4"
20	4,000mm	1571/2"
30	6,000mm	2361/4"
40	8,000mm	315"
50	10,000mm	3933/4"
100	20,000mm	7871/2"

Horizontal Units	10mm Joint	3/8" Joint
1	600mm	235/8"
2	1,200mm	471/4"
3	1,800mm	703/4"
4	2,400mm	943/8"
5	3,000mm	118"
6	3,600mm	1415/8"
7	4,200mm	1651/4"
8	4,800mm	1887/8"
9	5,400mm	2123/8"
10	6,000mm	236"
20	12,000mm	472"
30	18,000mm	7081/8"
40	24,000mm	9441/8"
50	30,000mm	1,1801/8"
100	60,000mm	2,3603/8"

CODES & STANDARDS

Shouldice Stone Products are supported by the following National Codes & Standards. Refer to local building codes and standards to confirm best practice.

CANADIAN

[CSA A165 Standards on Concrete Masonry Units](#)

[CSA A371 Masonry Construction for Buildings](#)

[CSA A179 Mortar and Grout for Unit Masonry](#)

[CSA A370 Connectors for Masonry](#)

AMERICAN

[ASTM C55 Specification for Concrete Building Brick](#)

[ASTM C90 Specification for Loadbearing Concrete Masonry Units](#)

[ASTM C270 Specification for Mortar for Unit Masonry](#)

[ASTM C476 Specification for Grout for Masonry](#)

[ASTM C1634 Specification for Concrete Facing Brick and Other Concrete Masonry Facing Units](#)

[NCMA TEK 8-4A Cleaning Concrete Masonry](#)

[NCMA TEK 9-1A Mortars for Concrete Masonry](#)

[NCMA TEK 8-3A Control and Removal of Efflorescence](#)

[NCMA TEK 10-4 Crack Control for Concrete Brick and other Concrete Masonry Veneers](#)

[NCMA TEK 19-5A Flashing Details for Concrete Masonry Walls](#)

TYPICAL UNIT PROPERTIES

Products exceed the CSA and ASTM standards.

	Standard	Compression Strength	Absorption	Density	Fire Rate (Hours)
CSA	A165.1	>15mpa	<8%	>2000kg/m ²	1.4
ASTM	C1634	>3000psi	<12lb/ft ³	>125lb/ft ³	

HATCH PATTERNS & TEXTURE MAPS

To access Shouldice Stone Hatch Patterns and texture maps visit the corresponding [shouldice.ca](https://www.shouldice.ca) [product page](#) for current availability.

CONTACT US

For technical questions regarding our product line please contact our knowledgeable customer service team. By phone: **800.265.3174** or email: **designer@shouldice.ca**